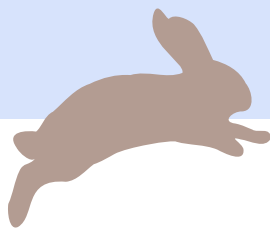


2022-2023

Welcome to Chapin!

The Humanities Res College





Welcome!

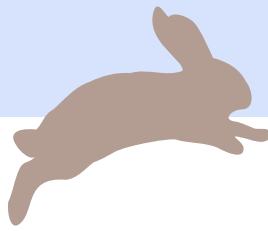
Dear newest residents of Chapin,

You all are now Chapinos (Chuh-pinos)! What is a Chapino, you may ask?

A Chapino is defined as a member of Chapin. To be a Chapino is to stay up late in the War Room working on an essay. To be a Chapino is to go to Chormal (Chapin formal) and dance the night away. To be a Chapino is to get snacks from munchies with your roommate and socialize with other Chapinos who were working in their rooms but have been coerced outside by the promise of free food. To be a Chapino is to read the weekly edition of The Flux on the back of the bathroom stall whether you like it or not.

Chapin is part of the larger residential college system, and we have our own traditions and culture in this beautiful building (with huge rooms but no AC, so bring a fan!) that we call home. We are still emerging from our COVID-era, so we as Chexec are doing our best to revive the traditions of the Humanities Res College and redefine our own. This is cheesy, but res college community is built around its residents, so we are so excited to welcome you all in the fall! Please don't hesitate to reach out to us on Instagram or GroupMe if you have any questions!

Sincerely,
Chexec



Important Links!

- Packing list (What to bring):
www.northwestern.edu/living/incoming-undergraduates/things-to-bring.html
- NetID Settings (To get on WiFi and NU services):
nuvalidate.northwestern.edu
- Canvas (All of your classes and Wildcat Welcome Events): <https://canvas.northwestern.edu/>
- Website (Much info on our little home):
chapinhall.weebly.com
- Groupme (Important! Lots of info + answers to your questions):
groupme.com/join_group/87211152/SiY5NnhR
- Events Calendar (Guide to official Chapin events):
bit.ly/chapincal



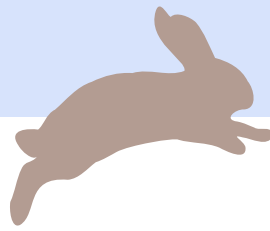
Join the GroupMe!!

Map

More detailed map:

<https://maps.northwestern.edu/evanston>



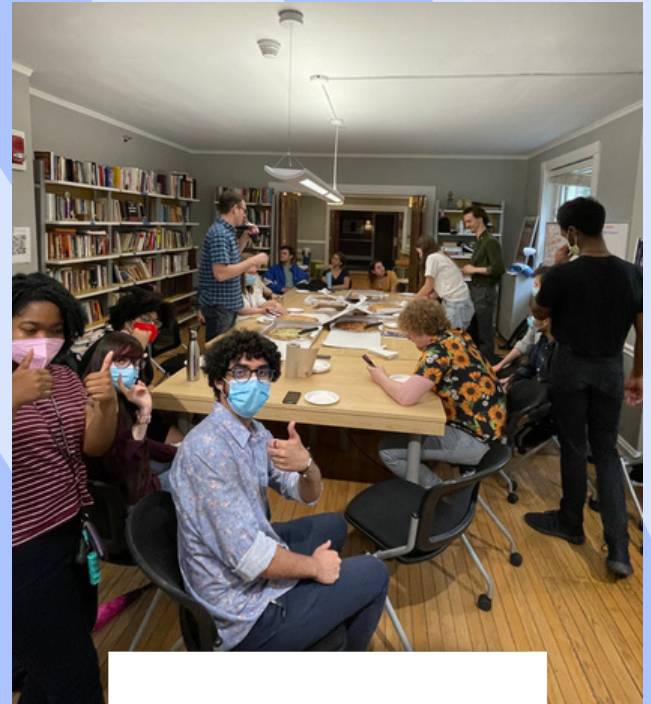


Traditions!

- Ch-Prefix - We put “ch” in front of words that really do not need (but really want) a “ch” in front of them, ex. chmedia lounge, chanksgiving dinner
- Thirs-Tea Thursdays - Chapinos and Associate Chair Molly Galahue join together for tea, complete with snacks and important “is a hotdog a sandwich?” conversations
- Chapin Cinema Club - Every other Friday night, Chapinos gather in the media lounge to watch a film
- Fellows Lunch - Chapin fellows join students in Allison Dining Hall or the Willard Courtyard for lunch and casual conversation
- Firesides - Talks hosted in Chapin by fellows, your favorite professors, or whoever we can find that has something they love talking about
- Chormal - Chapin’s annual formal hosted in the spring
- Choffeehouse - At the end of each quarter, Chapinos gather to perform for one another, bask in each other’s talents, drink (coffee) and be merry
- Ravina Memorial Fundraiser - In honor of Ravina Thakkar, a beloved Chapino, who passed away from Cystic Fibrosis in 2019, celebrate her life and raise money to cure Cystic Fibrosis (we raised \$1,328 in May!)



Boba munchies



Ravina Fundraiser



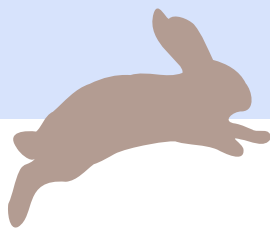
Field Day!



Thirs-Tea Thursday



Amazing Faculty Chair, Tom Burke, and a tribute to Ravina



Lingo

TND

"True Northwestern Dialogues," mandatory info sessions for first years on important topics during Wildcat Welcome

Helicon

NU's Literary Magazine with roots in Chapin Res College

SPAC & Blom

NU Fitness centers found North and Mid Campus respectively. SPAC is much bigger + has a pool, but is far from Chapin

CTECS

You can find these on CAESAR and they tell you what people thought of a prof/ class

Plex

"Foster Walker Complex," a set of buildings that function as a dorm, 2 dining halls, and the package center where you'll go to get mail

Norris

Norris University Center with places you can use dining dollars and meal exchanges (Starbucks "Norbucks," Dunkin', Mod Pizza, Wildcat Deli, Patty Squared, Viet Nom Nom)

Deering

Pretty library mid-campus, has the Hogwarts reading room

Main

AKA University library, Honeycomb-shaped library connected to Deering, mid-campus by Norris, home of Brewbike (cafe where you can use dining dollars)

Mudd

Lots of study space, north campus behind Tech, open 24/7

Tech

"Technological Institute," north campus, site of many STEM and some econ classes, huge building that has a [designated website for navigating it](#)

Fran's

Open 6 PM - 1 AM with chicken tender and quesadilla meal exchanges, in the Willard basement, has milkshakes that are overpriced but good with add-ins

Meet Chexec!

Lesyle

Vice President



Janae

Treasurer



Alivia

Internal Social Chair



Cara

President



Shannon

External Social Chair



Meet Chexec!



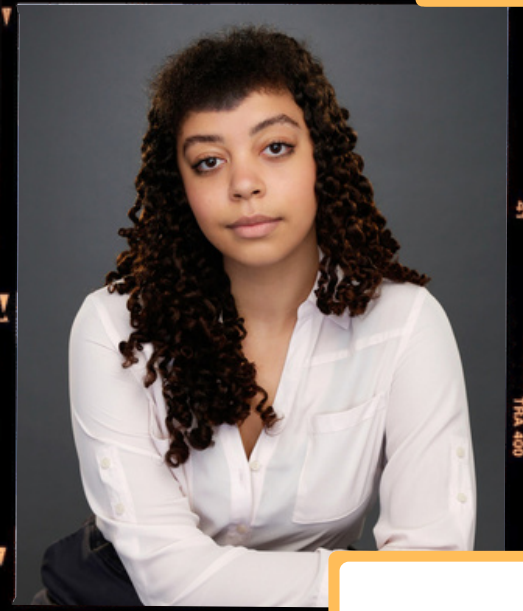
Alexis

Communications Chair



Lillian

Wellness Chair



Arwen-Vira

Philo Chair



Sulwen

Academic Chair

